

PCT 0066 CHESTERFIELD

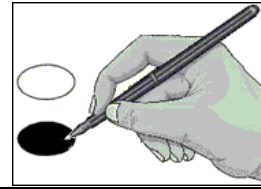
**Sample Ballot**  
 Burke County, North Carolina  
 November 8, 2022

**B0028**



**BALLOT MARKING INSTRUCTIONS:**

- A. With the marking device provided or a black ball point pen, completely fill in the oval to the left of each candidate or selection of your choice as shown.
- B. Where authorized, you may write in a candidate by filling in the oval and writing the name on the Write-in line.
- C. If you tear, deface or wrongly mark this ballot, return it to request a replacement.



FEDERAL OFFICES	NC Court of Appeals Judge Seat 9	DISTRICT OFFICES
<b>US Senate</b> (You may vote for ONE)	(You may vote for ONE)	<b>NC District Court Judge District 25 - Seat 1</b> (You may vote for ONE)
<input type="radio"/> <b>Matthew Hoh</b> Green Party	<input type="radio"/> <b>Brad A. Salmon</b> Democratic Party	<input type="radio"/> <b>David W. Ayccock</b> Republican Party
<input type="radio"/> <b>Cheri Beasley</b> Democratic Party	<input type="radio"/> <b>Donna Stroud</b> Republican Party	
<input type="radio"/> <b>Shannon W. Bray</b> Libertarian Party	<b>NC Court of Appeals Judge Seat 10</b> (You may vote for ONE)	<b>NC District Court Judge District 25 - Seat 2</b> (You may vote for ONE)
<input type="radio"/> <b>Ted Budd</b> Republican Party	<input type="radio"/> <b>John M. Tyson</b> Republican Party	<input type="radio"/> <b>Wes W. Barkley</b> Republican Party
<input type="radio"/> Write-in	<input type="radio"/> <b>Gale Murray Adams</b> Democratic Party	
<b>US House of Representatives District 10</b> (You may vote for ONE)	<b>NC Court of Appeals Judge Seat 11</b> (You may vote for ONE)	<b>NC District Court Judge District 25 - Seat 3</b> (You may vote for ONE)
<input type="radio"/> <b>Pam Genant</b> Democratic Party	<input type="radio"/> <b>Darren Jackson</b> Democratic Party	<input type="radio"/> <b>Sherri Wilson Elliott</b> Republican Party
<input type="radio"/> <b>Patrick McHenry</b> Republican Party	<input type="radio"/> <b>Michael J. Stading</b> Republican Party	<b>NC District Court Judge District 25 - Seat 4</b> (You may vote for ONE)
<input type="radio"/> Write-in		
STATE OFFICES	<b>NC State Senate District 46</b> (You may vote for ONE)	<input type="radio"/> <b>Robert A. Mullinax, Jr.</b> Republican Party
<b>NC Supreme Court Associate Justice - Seat 3</b> (You may vote for ONE)	<input type="radio"/> <b>Warren Daniel</b> Republican Party	<b>NC District Court Judge District 25 - Seat 5</b> (You may vote for ONE)
<input type="radio"/> <b>Richard Dietz</b> Republican Party	<input type="radio"/> <b>Billy Martin</b> Democratic Party	<input type="radio"/> <b>Amy Sigmon Walker</b> Republican Party
<input type="radio"/> <b>Lucy Inman</b> Democratic Party	<b>NC House of Representatives District 86</b> (You may vote for ONE)	<b>NC District Court Judge District 25 - Seat 6</b> (You may vote for ONE)
<b>NC Supreme Court Associate Justice - Seat 5</b> (You may vote for ONE)	<input type="radio"/> <b>Hugh Blackwell</b> Republican Party	<input type="radio"/> <b>Clifton H. Smith</b> Republican Party
<input type="radio"/> <b>Sam J. Ervin IV</b> Democratic Party	<b>DISTRICT OFFICES</b>	
<input type="radio"/> <b>Trey Allen</b> Republican Party	<b>NC Superior Court Judge District 25A - Seat 2</b> (You may vote for ONE)	<b>NC District Court Judge District 25 - Seat 7</b> (You may vote for ONE)
<b>NC Court of Appeals Judge Seat 8</b> (You may vote for ONE)	<input type="radio"/> <b>Daniel (Dan) Kuehnert</b> Republican Party	<input type="radio"/> <b>Mark L. Killian</b> Republican Party
<input type="radio"/> <b>Julee Tate Flood</b> Republican Party		
<input type="radio"/> <b>Carolyn Jennings Thompson</b> Democratic Party		
	- VOTE BOTH SIDES -	Continue Voting next side →
	North Carolina	Ballot Style B0028

SAMPLE BALLOT	PCT 0066	CHESTERFIELD	SAMPLE BALLOT
	<p><b>NC District Court Judge District 25 - Seat 8</b> Unexpired term ending 2025 (You may vote for ONE)</p> <p><input type="radio"/> <b>Scott D. Conrad</b> Republican Party</p> <p><input type="radio"/> <b>Steve B. Potter</b> Democratic Party</p>		
SAMPLE BALLOT	<p><b>District Attorney District 36</b> (You may vote for ONE)</p> <p><input type="radio"/> <b>Scott Reilly</b> Republican Party</p>		SAMPLE BALLOT
	<p style="text-align: center;"><b>COUNTY OFFICES</b></p> <p><b>Board of Commissioners</b> (You may vote for TWO)</p> <p><input type="radio"/> <b>Phil Smith</b> Republican Party</p> <p><input type="radio"/> <b>Steve W. Starnes</b> Democratic Party</p> <p><input type="radio"/> <b>Kyle Whisnant</b> Democratic Party</p> <p><input type="radio"/> <b>Randy Burns</b> Republican Party</p>		
SAMPLE BALLOT	<p><b>Clerk of Superior Court</b> (You may vote for ONE)</p> <p><input type="radio"/> <b>Crystal R. Carpenter</b> Republican Party</p> <p><input type="radio"/> <b>Becky Weatherman</b> Democratic Party</p>		SAMPLE BALLOT
	<p style="text-align: center;"><b>Sheriff</b> (You may vote for ONE)</p> <p><input type="radio"/> <b>Banks Hinceman</b> Republican Party</p>		
SAMPLE BALLOT	<p style="text-align: center;"><b>NONPARTISAN OFFICES</b></p> <p><b>Soil and Water Conservation District Supervisor</b> (You may vote for TWO)</p> <p><input type="radio"/> <b>Joshua Pless</b></p> <p><input type="radio"/> <b>Joseph Wenzel</b></p> <p><input type="radio"/> _____ Write-in</p> <p><input type="radio"/> _____ Write-in</p>		SAMPLE BALLOT
	<p style="text-align: center;"><b>End of Ballot</b></p>		
SAMPLE BALLOT	- VOTE BOTH SIDES -		SAMPLE BALLOT
	<p style="text-align: center;">North Carolina</p>		
		Ballot Style B0028	