

PCT 0047-A

QUAKER MEADOWS 1-A 0047-A

Sample Ballot
Burke County, North Carolina
November 3, 2020

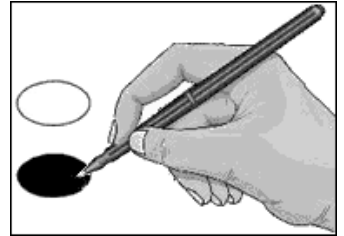


B0023



BALLOT MARKING INSTRUCTIONS:

- A. With the marking device provided or a black ball point pen, completely fill in the oval to the left of each candidate or selection of your choice as shown.
- B. Where authorized, you may write in a candidate by filling in the oval and writing the name on the Write-in line.
- C. If you tear, deface or wrongly mark this ballot, return it to request a replacement.



FEDERAL OFFICES	STATE OFFICES	
<p>President and Vice President of the United States (You may vote for ONE)</p> <p><input type="radio"/> Donald J. Trump Michael R. Pence Republican</p> <p><input type="radio"/> Joseph R. Biden Kamala D. Harris Democrat</p> <p><input type="radio"/> Don Blankenship William Mohr Constitution</p> <p><input type="radio"/> Howie Hawkins Angela Walker Green</p> <p><input type="radio"/> Jo Jorgensen Jeremy (Spike) Cohen Libertarian</p> <p><input type="radio"/> Write-in</p>	<p>NC Governor (You may vote for ONE)</p> <p><input type="radio"/> Al Pisano Constitution</p> <p><input type="radio"/> Roy Cooper Democrat</p> <p><input type="radio"/> Steven J. DiFiore Libertarian</p> <p><input type="radio"/> Dan Forest Republican</p> <p>NC Lieutenant Governor (You may vote for ONE)</p> <p><input type="radio"/> Mark Robinson Republican</p> <p><input type="radio"/> Yvonne Lewis Holley Democrat</p> <p>NC Attorney General (You may vote for ONE)</p> <p><input type="radio"/> Jim O'Neill Republican</p> <p><input type="radio"/> Josh Stein Democrat</p> <p>NC Auditor (You may vote for ONE)</p> <p><input type="radio"/> Anthony Wayne (Tony) Street Republican</p> <p><input type="radio"/> Beth A. Wood Democrat</p> <p>NC Commissioner of Agriculture (You may vote for ONE)</p> <p><input type="radio"/> Steve Troxler Republican</p> <p><input type="radio"/> Jenna Wadsworth Democrat</p> <p>NC Commissioner of Insurance (You may vote for ONE)</p> <p><input type="radio"/> Mike Causey Republican</p> <p><input type="radio"/> Wayne Goodwin Democrat</p> <p style="text-align: center;">- VOTE BOTH SIDES -</p>	<p>NC Commissioner of Labor (You may vote for ONE)</p> <p><input type="radio"/> Josh Dobson Republican</p> <p><input type="radio"/> Jessica Holmes Democrat</p> <p>NC Secretary of State (You may vote for ONE)</p> <p><input type="radio"/> E.C. Sykes Republican</p> <p><input type="radio"/> Elaine Marshall Democrat</p> <p>NC Superintendent of Public Instruction (You may vote for ONE)</p> <p><input type="radio"/> Catherine Truitt Republican</p> <p><input type="radio"/> Jen Mangrum Democrat</p> <p>NC Treasurer (You may vote for ONE)</p> <p><input type="radio"/> Ronnie Chatterji Democrat</p> <p><input type="radio"/> Dale R. Folwell Republican</p> <p>NC Supreme Court Chief Justice Seat 1 (You may vote for ONE)</p> <p><input type="radio"/> Cheri Beasley Democrat</p> <p><input type="radio"/> Paul Newby Republican</p> <p>NC Supreme Court Associate Justice Seat 2 (You may vote for ONE)</p> <p><input type="radio"/> Phil Berger, Jr. Republican</p> <p><input type="radio"/> Lucy Inman Democrat</p> <p>Continue Voting next side →</p>
<p>US Senate (You may vote for ONE)</p> <p><input type="radio"/> Thom Tillis Republican</p> <p><input type="radio"/> Shannon W. Bray Libertarian</p> <p><input type="radio"/> Cal Cunningham Democrat</p> <p><input type="radio"/> Kevin E. Hayes Constitution</p>	<p>US House of Representatives District 5 (You may vote for ONE)</p> <p><input type="radio"/> David Wilson Brown Democrat</p> <p><input type="radio"/> Virginia Foxx Republican</p> <p><input type="radio"/> Jeff Gregory Constitution</p>	<p>NC Treasurer (You may vote for ONE)</p> <p><input type="radio"/> Ronnie Chatterji Democrat</p> <p><input type="radio"/> Dale R. Folwell Republican</p> <p>NC Supreme Court Chief Justice Seat 1 (You may vote for ONE)</p> <p><input type="radio"/> Cheri Beasley Democrat</p> <p><input type="radio"/> Paul Newby Republican</p> <p>NC Supreme Court Associate Justice Seat 2 (You may vote for ONE)</p> <p><input type="radio"/> Phil Berger, Jr. Republican</p> <p><input type="radio"/> Lucy Inman Democrat</p> <p>Continue Voting next side →</p>
North Carolina		Ballot Style B0023

SAMPLE BALLOT

SAMPLE BALLOT

SAMPLE BALLOT

SAMPLE BALLOT

SAMPLE BALLOT

SAMPLE BALLOT

SAMPLE BALLOT

SAMPLE BALLOT

SAMPLE BALLOT

SAMPLE BALLOT

SAMPLE BALLOT

SAMPLE BALLOT

PCT 0047-A		QUAKER MEADOWS 1-A 0047-A	
NC Supreme Court Associate Justice Seat 4 (You may vote for ONE) <input type="radio"/> Tamara Barringer <small>Republican</small> <input type="radio"/> Mark Davis <small>Democrat</small>		NC House of Representatives District 86 (You may vote for ONE) <input type="radio"/> Cecelia Surratt <small>Democrat</small> <input type="radio"/> Hugh Blackwell <small>Republican</small>	
NC Court of Appeals Judge Seat 4 (You may vote for ONE) <input type="radio"/> Tricia Shields <small>Democrat</small> <input type="radio"/> April C. Wood <small>Republican</small>		DISTRICT OFFICES NC District Court Judge District 25 Seat 8 (You may vote for ONE) <input type="radio"/> Burford A. Cherry <small>Republican</small>	
NC Court of Appeals Judge Seat 5 (You may vote for ONE) <input type="radio"/> Lora Christine Cabbage <small>Democrat</small> <input type="radio"/> Fred Gore <small>Republican</small>		NC District Court Judge District 25 Seat 9 (You may vote for ONE) <input type="radio"/> Richard S. Holloway <small>Republican</small>	
NC Court of Appeals Judge Seat 6 (You may vote for ONE) <input type="radio"/> Gray Styers <small>Democrat</small> <input type="radio"/> Chris Dillon <small>Republican</small>		NC District Court Judge District 25 Seat 10 (You may vote for ONE) <input type="radio"/> Andrea Chiz Plyler <small>Republican</small>	
NC Court of Appeals Judge Seat 7 (You may vote for ONE) <input type="radio"/> Reuben F. Young <small>Democrat</small> <input type="radio"/> Jeff Carpenter <small>Republican</small>		COUNTY OFFICES Board of Commissioners (You may vote for THREE) <input type="radio"/> Dorian Palmer <small>Democrat</small> <input type="radio"/> Jeff Brittain <small>Republican</small> <input type="radio"/> Johnnie Carswell <small>Republican</small> <input type="radio"/> Matthew Lucas Church <small>Democrat</small> <input type="radio"/> Diane Ervin Conley <small>Democrat</small> <input type="radio"/> Scott Mulwee <small>Republican</small>	
NC Court of Appeals Judge Seat 13 (You may vote for ONE) <input type="radio"/> Chris Brook <small>Democrat</small> <input type="radio"/> Jefferson G. Griffin <small>Republican</small>		Register of Deeds (You may vote for ONE) <input type="radio"/> Stephanie A. Norman <small>Republican</small>	
NC State Senate District 46 (You may vote for ONE) <input type="radio"/> Edward Phifer <small>Democrat</small> <input type="radio"/> Warren Daniel <small>Republican</small>		- VOTE BOTH SIDES - North Carolina	
		Ballot Style B0023	